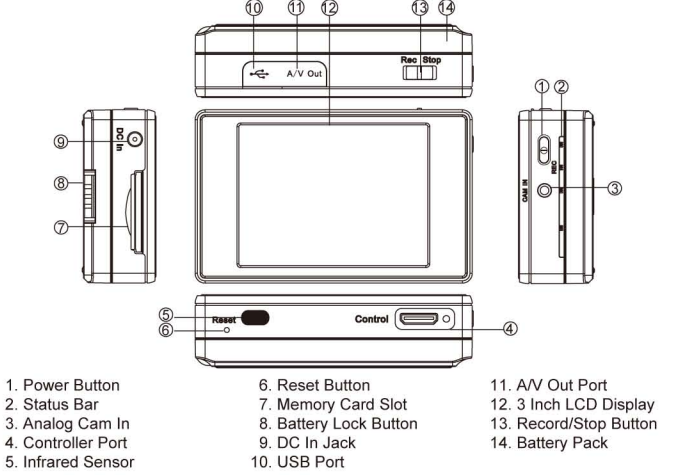
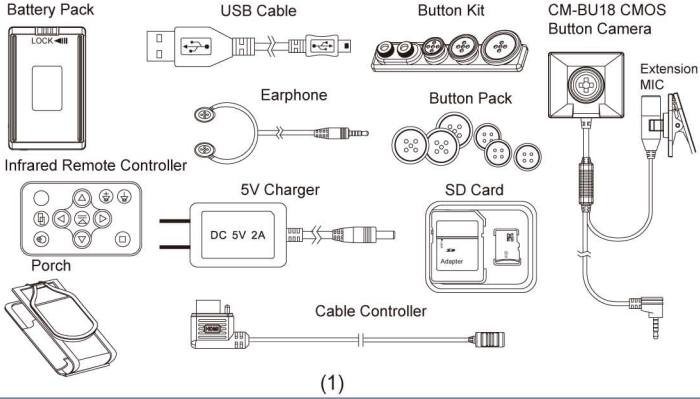


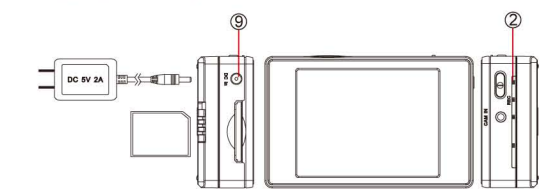
1. Name and Parts



2. Package Content

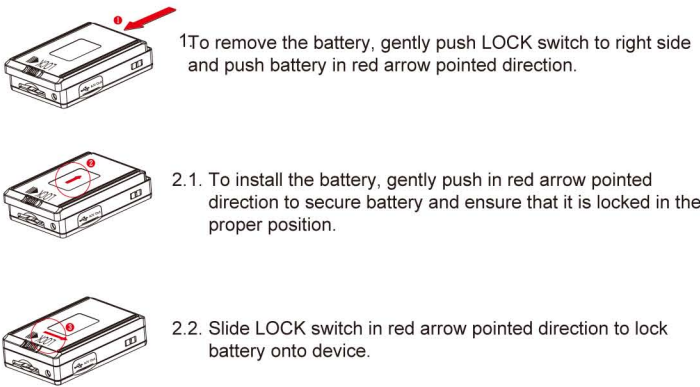


3. Charging Battery

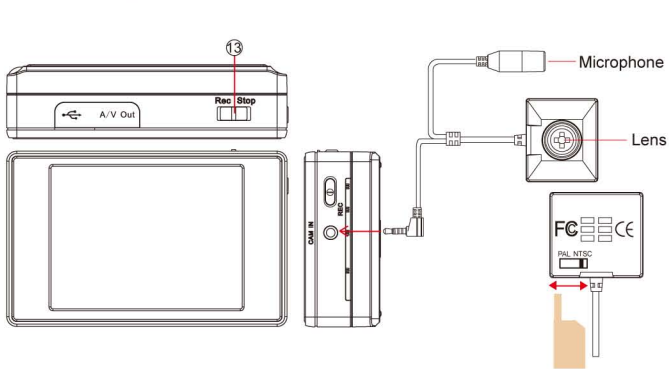


- 1.Plug charger into DC In port (9) on device.
- 2.PWR singals in red color (2) to show the device is charging. (3-4 hours)
- 3.After charging is completed, red color signal turns off automatically.

4. Installing Battery

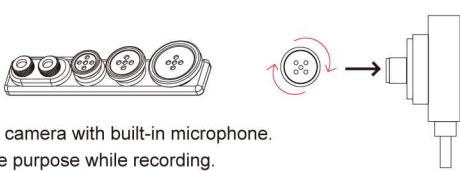


5. Connecting CM-BU18 to DVR



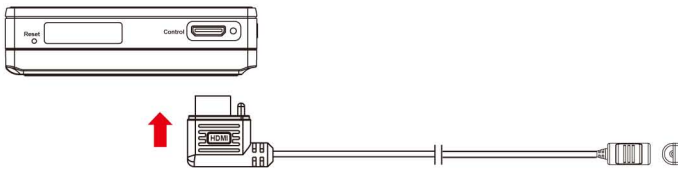
1. Switch to NTSC or PAL system(at the back of the camera) before connecting to the device.
2. Install the device as the illustration shown above.
3. Press POWER-ON button for 3 seconds to turn on DVR.
4. Green LED light illuminates to show the DVR is turned on properly.
5. Switch to REC (13) to start recording. (Red LED illuminates when recording starts)
6. Switch to Stop (13) to stop recording.

6. Button-look camera



CM-BU18 is a CMOS covert camera with built-in microphone. Its button look offers disguise purpose while recording. In the accessory pack you may find button kits in 3 different size which may help users to cover the lens.

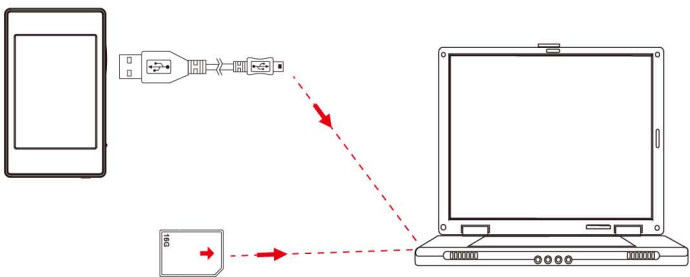
7. Connecting Cable Controller



1. PV-500L2 controller serves to instantly turn on and off the DVR with instant recording functionality.
2. Plug HDMI Cable into Control port in red arrow pointed direction to connect cable controller.
3. Switch Rec/Stop to Rec to start recording.
4. Slide the controller toggle downward to turn on PV-500L2, DVR will start to record simultaneously.
5. To stop recording, slide the controller toggle downward again. The DVR will turn off at the same time. The video recorded will be stored on memory card.

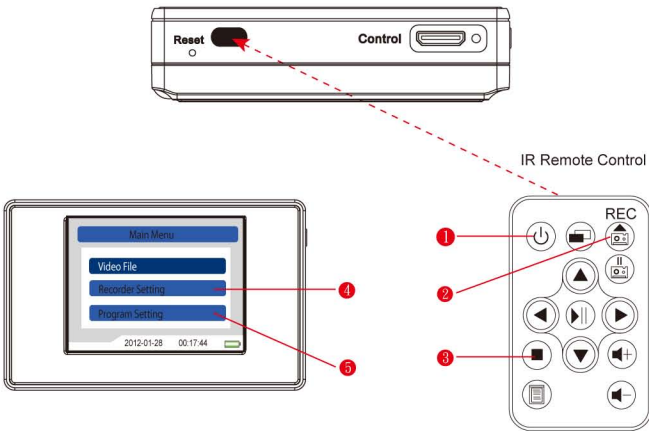
Note that if the switch is in Stop, cable controller only serves to turn on and off the device.

7. Retrieving Video Footage



1. Video file is stored on the Memory card.
2. There are two methods to retrieve video files.
(1) Using USB Cable to connect to computer
(2) Using memory card reader to read and write from the folder directory
3. Computer detects the storage and user may browse and operate the storage, i.e.,Rename, copy and paste, delete, duplicate, etc.

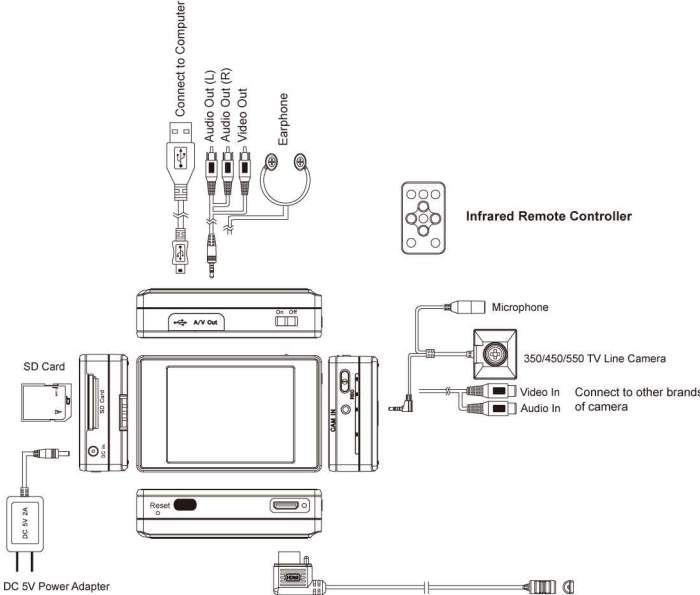
8. Using Infrared Remote Controller and Editing Settings



1. Turn on DVR before using IR remote control .
2. Aim IR Remote Controller at the sensor area to control device remotely.
3. Press Rec (2) on the IR remote to start recording and press (3) to stop .
4. Press (1) again to return to Main Menu page.
6. Entering Recorder Setting (4) to turn on the Motion Detect.
7. Entering Program Setting (5) to edit the setting.
6. To turn off the DVR, press Power button (1) .

Note that the power button on IR remote control only servers to turn off the DVR.

9. PV-500L2 Connection Illustration



PV-500L2
Portable Digital Video Recorder
Quick Guide

